

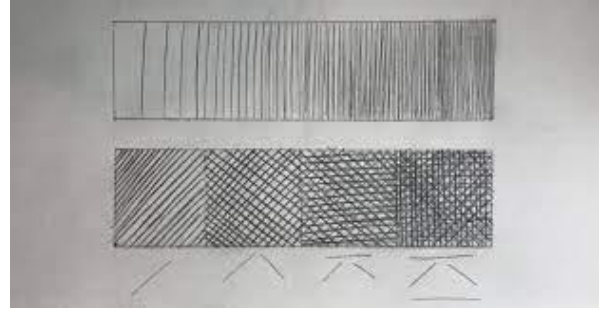
Sketching



Skill

observing looking carefully at an image to recreate it accurately.
using tone showing which areas of your drawing are lighter and darker.

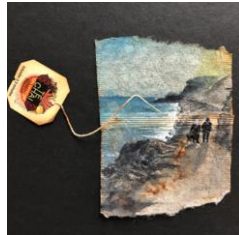
Use cross-hatching to show which areas are lighter and darker.



Experimenting with different media

Skill

Selecting different materials: we can use everyday objects in our art, for example using lego bricks to create shapes that feature in our workhouse drawings. We can use natural dyes like tea for colour.



Ruby Silvious' tea bag art

Printing with lego bricks



Making natural dyes

Representations of the workhouse



Illustration of Oliver Twist - James Mahoney



Photograph of the workhouse building in Eaton Socon

Ruby Silvious – contemporary artist



A Filipino-American artist famous for her miniature paintings on used tea bags.

Vocabulary Tier 2

Experiment
tools
shape
materials



THINK IT.



BELIEVE IT.

Vocabulary Tier 3

patterns
imagination



LIVE IT.