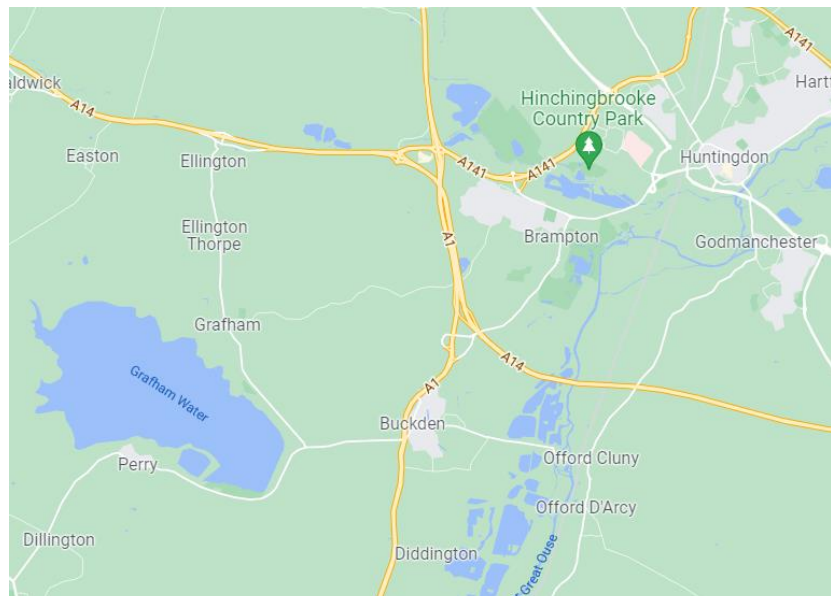


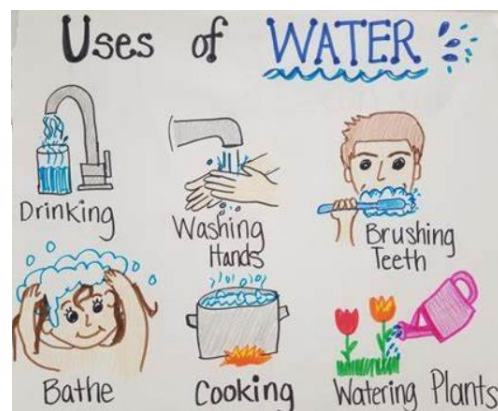
Grafham Water: England's third largest reservoir in Huntingdon in Cambridgeshire.



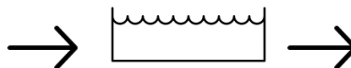
Water sources are **bodies of water** (such as rivers, streams, lakes, reservoirs and ground water) that can provide useful water to humans.



The Great Ouse River is 143 miles (230 km), mostly flowing North and East. It is the fifth longest river in the United Kingdom.



Reservoir- a large natural or artificial lake used as a source of water supply.



Dam- a barrier constructed to hold back water and raise its level, forming a reservoir.



Climate- the long-term weather in a place. **Climate change** describes a change in the average conditions — such as **temperature** and **rainfall** — in a region over a long period of time.

Drought



Floods



Vocabulary Tier 2

- Local
- Water
- Field
- River
- Weather



Vocabulary Tier 3

- Climate
- Reservoir
- Dam
- Rainfall
- Drought

