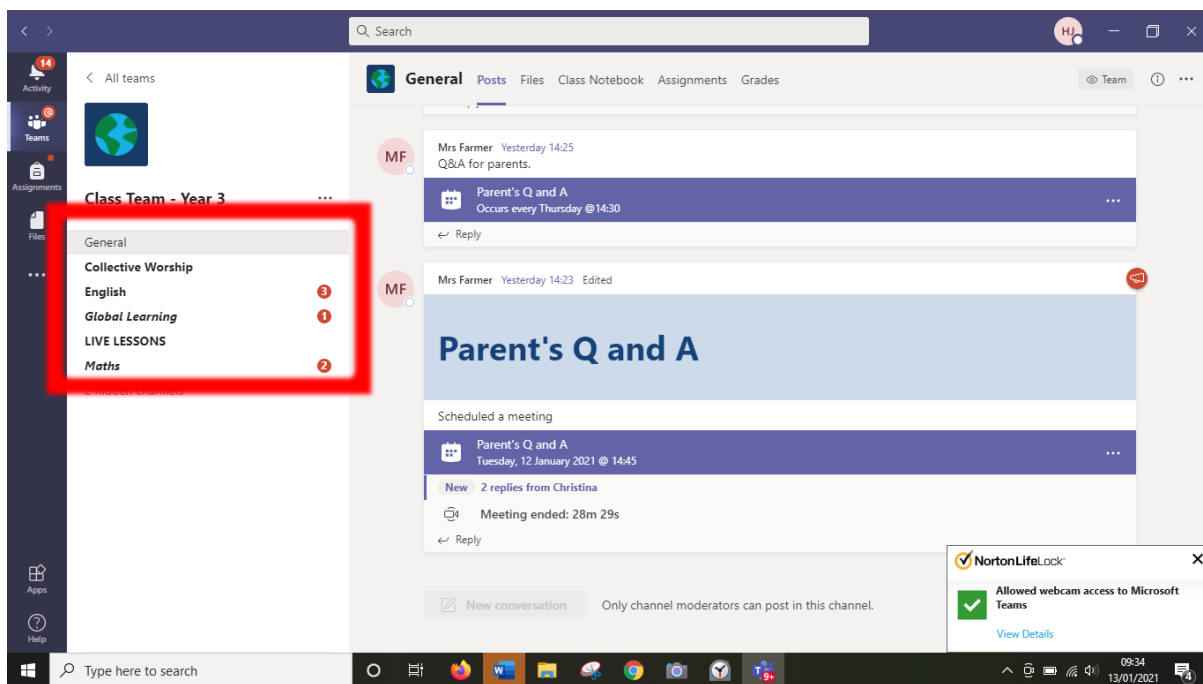
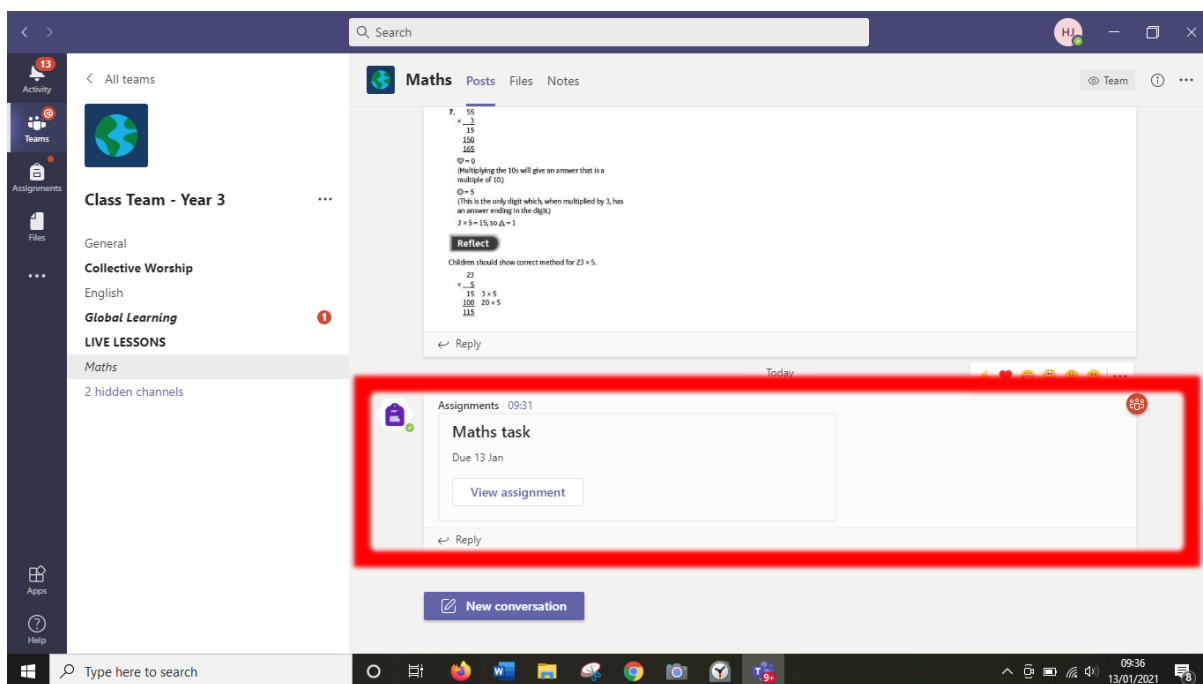


Find the lesson you need to do work for.



Look in the channel posts for the assignment.

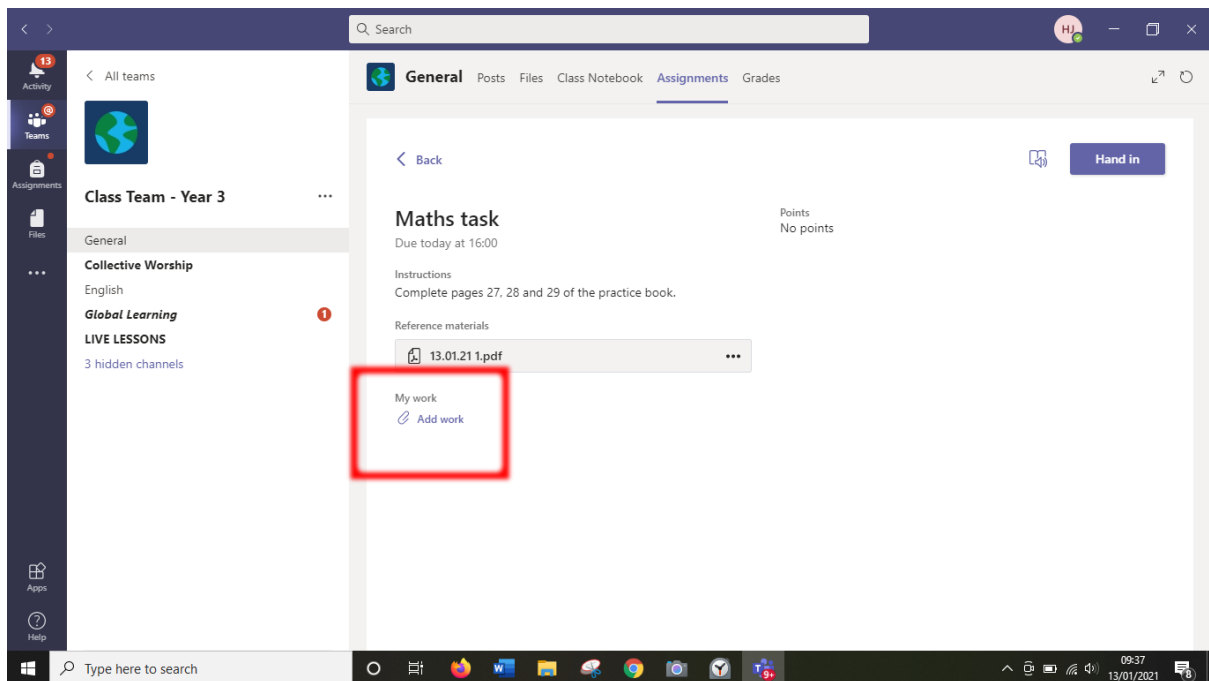


Click on it to open it. Then click on the work attached, if there is any, to view it.

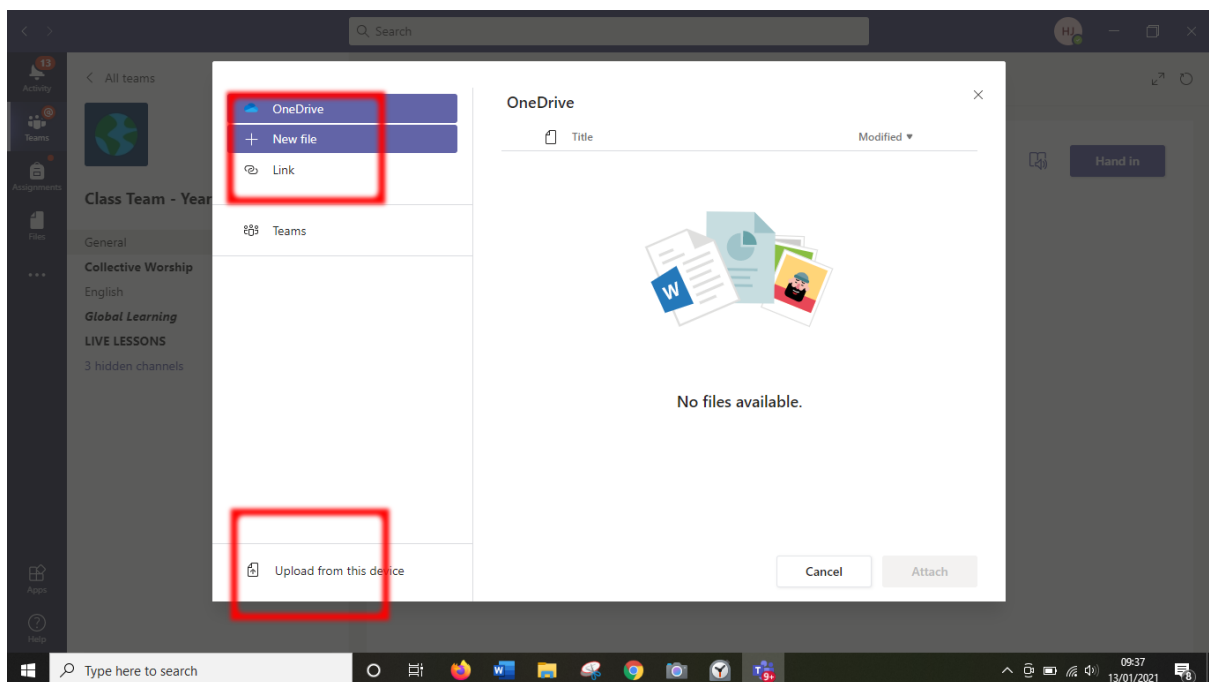
The screenshot shows a Microsoft Teams interface. On the left is a sidebar with 'All teams' and 'Class Team - Year 3'. The main area is titled 'General' and shows a 'Maths task' assignment due today at 16:00. A red rectangle highlights the 'Reference materials' section, which contains a file named '13.01.21 1.pdf'. Below this is a 'My work' section with an 'Add work' link. The bottom of the screen shows a Windows taskbar with various application icons and the system clock at 09:36 on 13/01/2021.

The screenshot shows a PDF document titled 'Dividing a 2-digit number by a 1-digit number'. The document contains several division problems and their solutions. On the left, there are problems like '1. Share 28 equally between 2', '2. 2 tens \div 2 =', '8 ones \div 2 =', '26 \div 2 =', '2a. 69 \div 3 =', '6 tens \div 3 =', '60 \div 3 =', 'ones \div =', '69 \div 3 =', '2b. 88 \div 4 =', '3. 95 \div 5 ='. On the right, there are more problems like '4a. \div 3 = 32', '90 \div 3 = 30', '4b. \div 2 =', '5. Use 1 2 3 6 9 to complete the division', 'Can you find different ways?', 'Repeat', '84 \div 4', 'First I would...', 'Then I would...', 'Finally I would...'. The bottom of the screen shows a Windows taskbar with various application icons and the system clock at 09:37 on 13/01/2021.

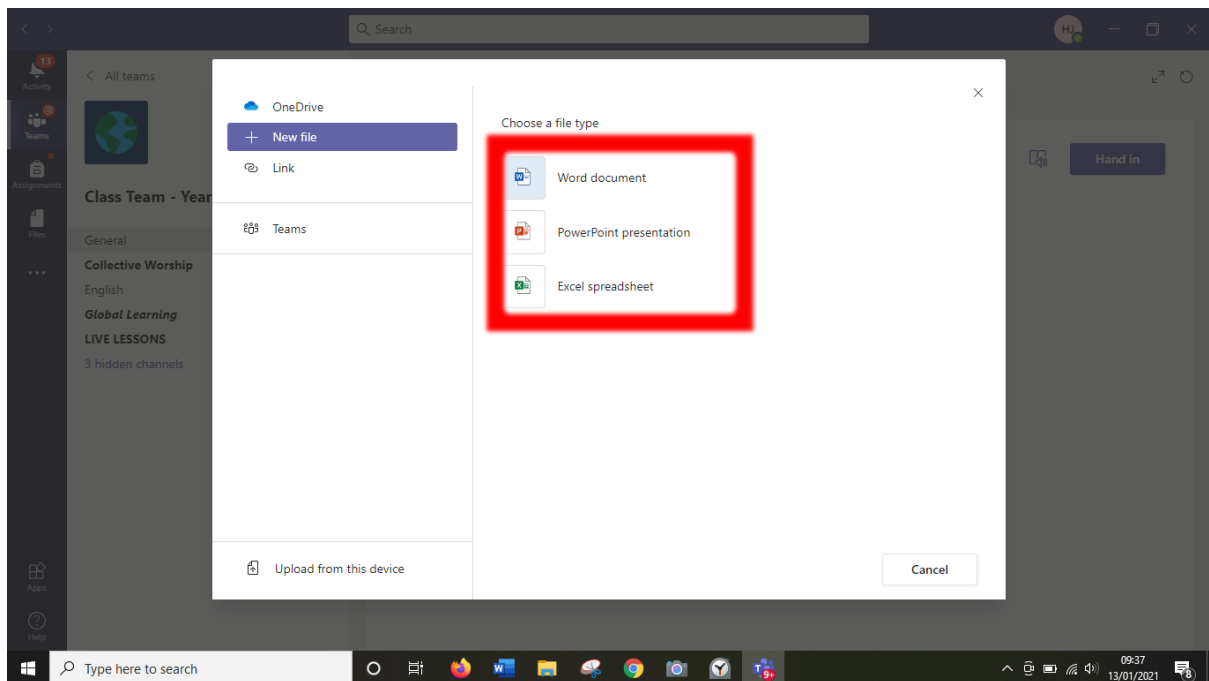
You can add your own work by clicking add work.



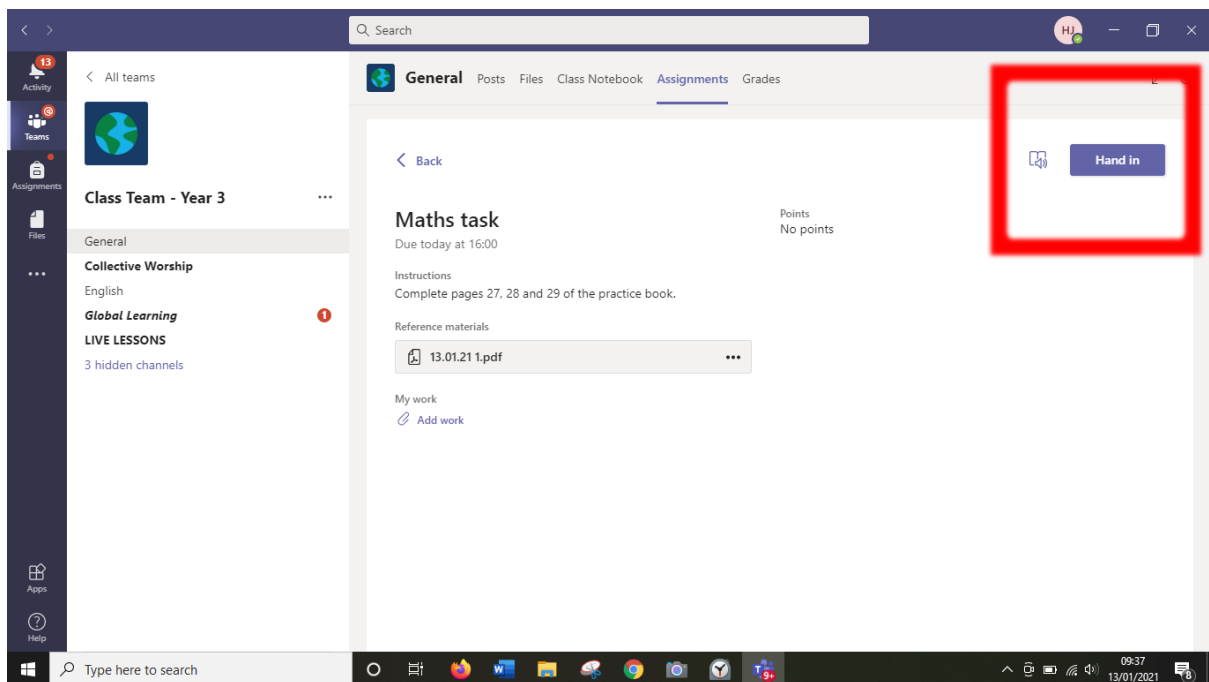
Click new file to make a new document or upload from this device if you want to attached a picture or piece of work you have saved to your computer.



Choose the type of document you want to make.



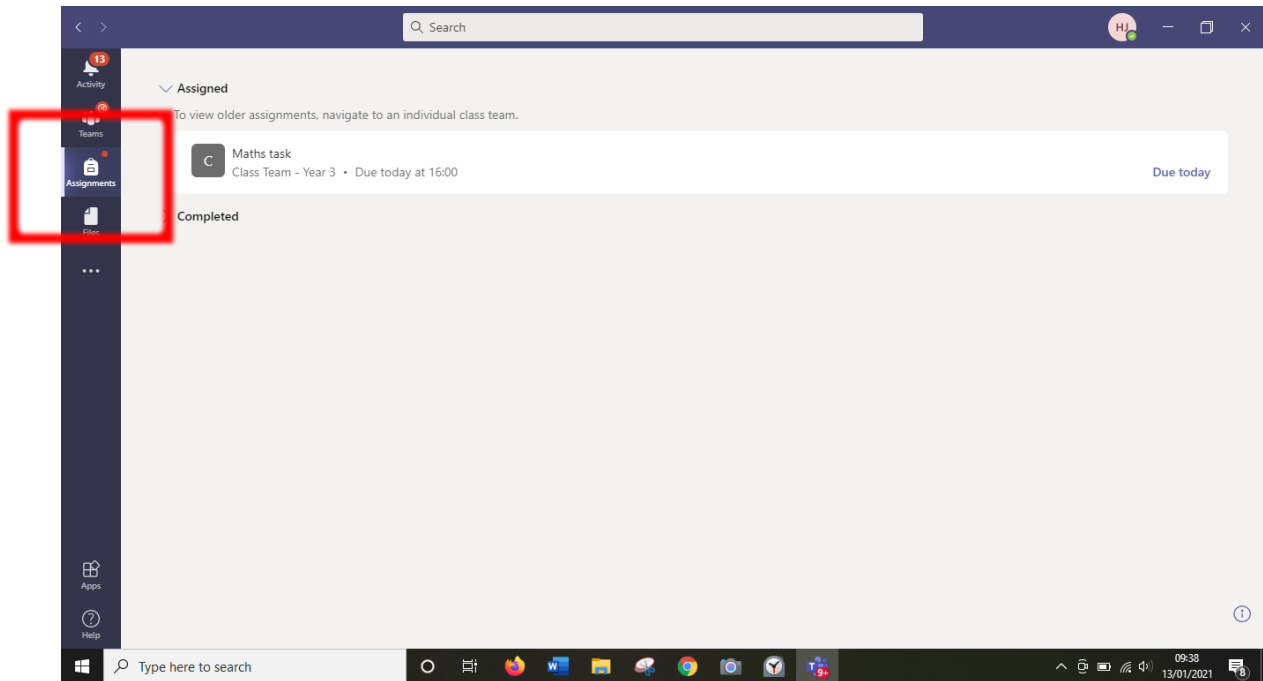
When you have finished, click the hand in button.



2.

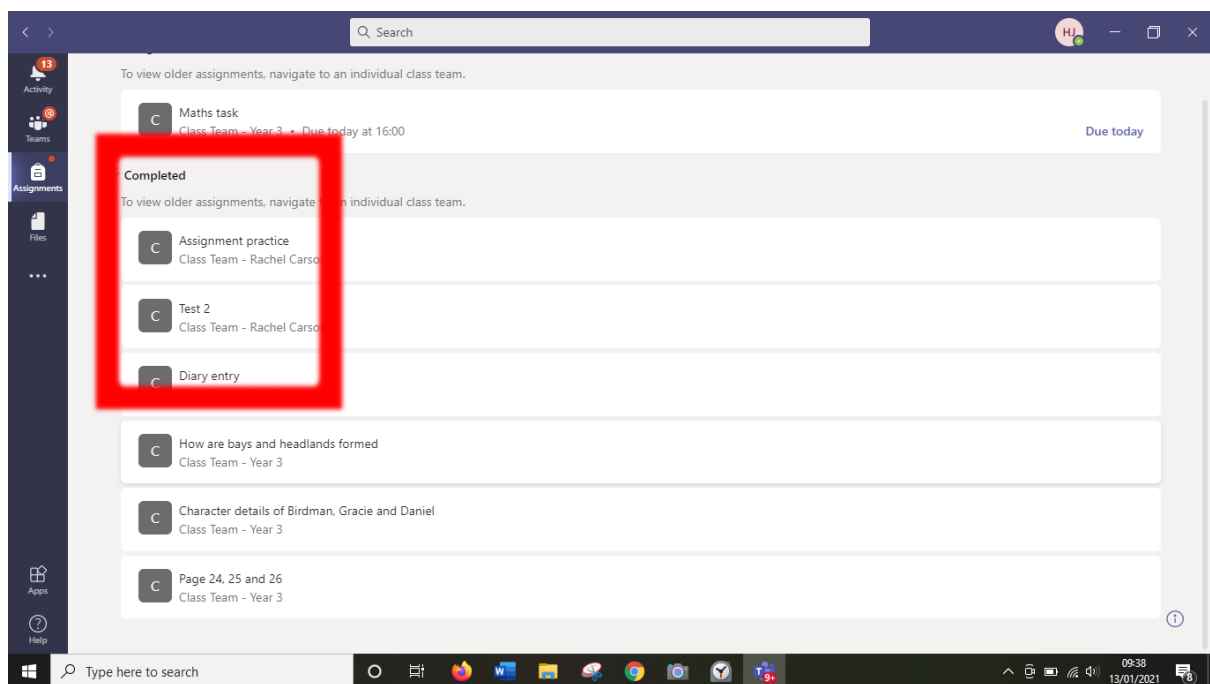
At the side bar this a tab called assignments. Click on this. Here you see your assigned work and completed work.

To complete work follow the steps above.



To see feedback on your work

Click on completed.



Here you can see feedback.

< > Search

Activity Teams Assignments Files Apps Help

< Back

How are bays and headlands formed

Due 11 January 2021 16:00

Instructions

Make a copy of this diagram to show the coastline before and after erosion.

Add the following labels:

- bay
- headland
- hard, resistant rock
- softer, less resistant rock
- Once formed, bays are sheltered and sand is deposited.

My work

Bays and Headlands.docx

Add work

Feedback

s

Points

No points

Returned Tue, 12 Jan, 17:01 Hand in late

Type here to search

09:39 13/01/2021