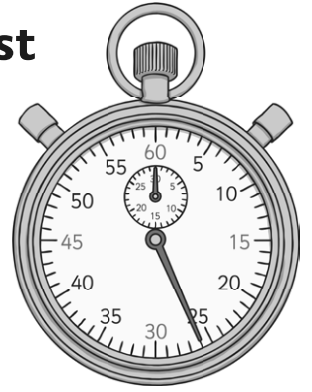


# Addition and Subtraction Facts to 20 – Speed Test

See how long it takes you to complete all of these or give yourself a set amount of time (say 5 mins) and see how many you can do.



$6 + 6 =$	$8 - 6 =$	$9 - 3 =$	$13 - 4 =$	$4 - 1 =$
$14 + 5 =$	$2 + 17 =$	$7 - 4 =$	$4 + 9 =$	$4 - 2 =$
$9 - 7 =$	$3 + 9 =$	$15 - 1 =$	$20 - 10 =$	$10 - 5 =$
$2 + 11 =$	$3 + 1 =$	$14 - 7 =$	$17 + 2 =$	$2 + 3 =$
$2 + 15 =$	$3 - 2 =$	$9 + 3 =$	$6 + 4 =$	$15 - 6 =$
$7 - 3 =$	$11 + 5 =$	$8 - 5 =$	$7 + 8 =$	$4 + 6 =$
$10 + 10 =$	$18 - 4 =$	$3 + 4 =$	$20 - 19 =$	$4 + 9 =$
$8 - 2 =$	$10 + 0 =$	$8 + 8 =$	$14 + 2 =$	$7 - 2 =$
$11 + 1 =$	$13 - 5 =$	$17 - 2 =$	$9 - 4 =$	$19 + 1 =$
$14 - 1 =$	$12 - 9 =$	$3 + 7 =$	$5 + 5 =$	$15 - 9 =$

Correct answers:

Time:

## Addition and Subtraction Facts to 20 – Speed Test: **Answers**

---

$6 + 6 = 12$	$8 - 6 = 2$	$9 - 3 = 6$	$13 - 4 = 9$	$4 - 1 = 3$
$14 + 5 = 19$	$2 + 17 = 19$	$7 - 4 = 3$	$4 + 9 = 13$	$4 - 2 = 2$
$9 - 7 = 2$	$3 + 9 = 12$	$15 - 1 = 14$	$20 - 10 = 10$	$10 - 5 = 5$
$2 + 11 = 13$	$3 + 1 = 4$	$14 - 7 = 7$	$17 + 2 = 19$	$2 + 3 = 5$
$2 + 15 = 17$	$3 - 2 = 1$	$9 + 3 = 12$	$6 + 4 = 10$	$15 - 6 = 9$
$7 - 3 = 4$	$11 + 5 = 16$	$8 - 5 = 3$	$7 + 8 = 15$	$4 + 6 = 10$
$10 + 10 = 20$	$18 - 4 = 14$	$3 + 4 = 7$	$20 - 19 = 1$	$4 + 9 = 13$
$8 - 2 = 6$	$10 + 0 = 10$	$8 + 8 = 16$	$14 + 2 = 16$	$7 - 2 = 5$
$11 + 1 = 12$	$13 - 5 = 8$	$17 - 2 = 15$	$9 - 4 = 5$	$19 + 1 = 20$
$14 - 1 = 13$	$12 - 9 = 3$	$3 + 7 = 10$	$5 + 5 = 10$	$15 - 9 = 6$