

**Think It.**

**Believe It.**

**Live It.**

Friday 19th June 2026

Weekly Round-up

Term Times

## Mark your Calendars

26th June  
/3<sup>rd</sup> July  
Sports  
Day

30<sup>th</sup> June  
Transition  
Week

8th/9th  
July - Year  
6 play

10<sup>th</sup> July  
Year 3  
Trip

### Sports Day Update

The safety and wellbeing of our children, parents and staff is always our highest priority. We want to reassure you that we do not intend to cancel Sports Day on Friday 26th June unless it becomes absolutely necessary.

A decision to cancel will only be made if the weather forecast predicts temperatures exceeding 30°C on Friday.

At this stage, please assume that Sports Day will go ahead as planned on Friday 26th June and plan accordingly. Should we need to cancel the event, we will inform parents by email by 10:30am on Thursday 25th June.

In the unlikely event that Sports Day cannot take place on the 26th June, the provisional alternative date will be Friday 3rd July.

### Summer BOSS Is Nearly Here!

Spaces are filling up fast — don't miss out on Summer BOSS! Bookings are now open on Magic Booking, and we're excited to welcome the children for two fantastic weeks of fun at the start of the summer holidays.

Summer BOSS will be packed with a great mix of activities to keep children active, creative and entertained. From outdoor games and sports to crafts and plenty of time with friends, there's something for everyone to enjoy.

#### Session dates:

- Monday 20 July - Thursday 23 July
- Monday 27 July - Thursday 30 July

You can mix and match the sessions that suit your family.

All bookings are made through Magic Booking. If you're new to the system, all setup information is available online to help you get started.

Please note that all bookings are non-refundable.

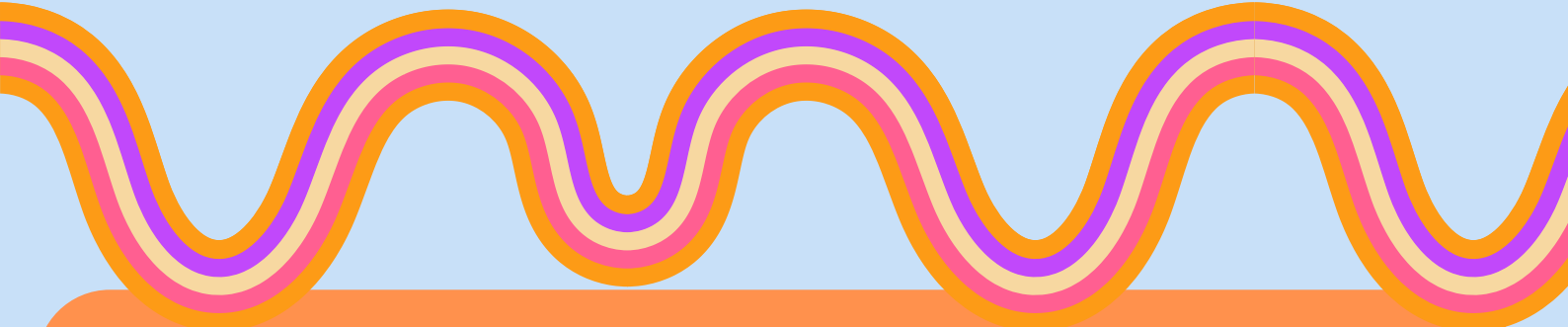
## FAQS Restructure

**How does this restructure fit into the school's long-term vision?**

The restructure does not fit with the schools long term vision. As the village expands with the build starting on Silver Street in 2027 we hope that the school will be able to increase its PAN to 60 and become 14 classes in the future. However, we envisage this will be a long process.

**How will the fact that Year 3 is normally taught in a different key stage be managed in a mixed class?**

Year 3 has been part of lower school for many years so logistically this is not a problem. We have already begun to set out the planning and will use adaptive teaching methods to ensure that all needs are met.



**With hot weather expected next week, we'd appreciate your help in keeping everyone comfortable at school. Please apply sun cream before your child arrives and send them in with a drinks bottle filled with cold water.**

**A sun hat will help provide shade, and summer uniform—such as a summer dress or school shorts—will help them stay cool throughout the day.**

**Shrek the Musical - Tickets Still Available for Year 6 Parents**

**Tickets for the Year 6 performance of Shrek the Musical are still available to purchase via the school shop. Year 6 parents who haven't secured their seats yet still have time to support our fantastic cast as they bring this brilliant show to life.**

**Thank you for supporting our young performers — it means so much to them.**

Buckden Parish Council

# TEEN

SUMMER EVENT

2026

Ages 11-18



**WHEN?**

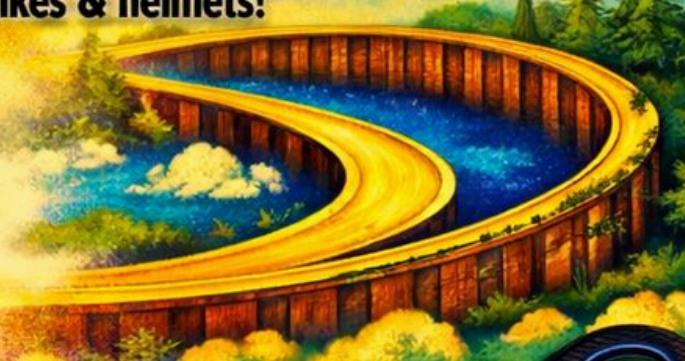
Friday 24<sup>th</sup> July 2026, 2:30pm - 6:30pm

**WHERE?**

Buckden Village Hall

**! ALL DAY PUMP TRACK with bikes & helmets!**

- ▶ DJ Workshops & Beat Boxing with a World Champion!
- ▶ Multi-Sports & CPR Training!
- ▶ Youth Voice: Share Your Ideas!
- ▶ Creative Art Painting Workshop
- ▶ Lots of Fun Activities!



**FREE PIZZA!**

Calling All Skaters, Bikers & More!

A Second Trial Pump Track Launching 1<sup>st</sup> August 2026!

**JOIN US!**



Scan to  
Book Your Spot!





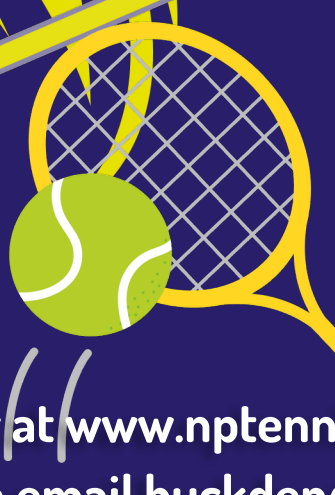
27th-31st July  
18th-21st August  
25th-28th August

Choose full course or select days

Blue/Red (4-7 years)  
11am-1pm

Orange/Green (8-11 years)  
11am-1pm

Yellow (12+ years)  
1.30pm-3.30pm

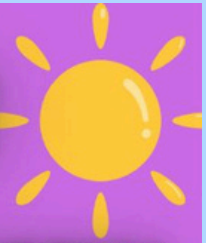


Buckden Tennis Club  
**CHILDREN'S  
SUMMER  
HOLIDAY  
COURSES**

Book now at [www.nptennis.co.uk](http://www.nptennis.co.uk) or  
for information email [buckden@nptennis.co.uk](mailto:buckden@nptennis.co.uk)



# SUMMER CAMPS



**ALCONBURY SPORTS & SOCIAL CLUB, PE28 4EX**  
**AUGUST 3<sup>RD</sup> - 14<sup>TH</sup>**  
**8:30-4:30PM**



# FREE!!

NO COST FOR THOSE ELIGIBLE  
OR FROM ONLY £18

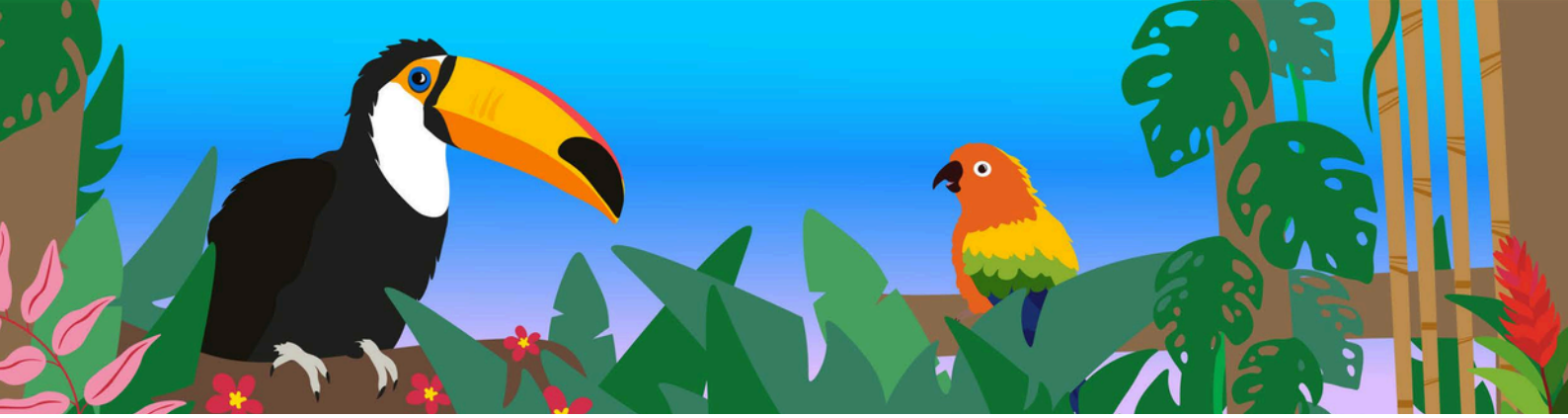
- **INCLUDING- ARTS & CRAFTS, MARTIAL ARTS, GIANT INFLATABLES, ANIMAL EXPERIENCES, COOKING, AXE THROWING, LASER TAG, SPORTS & GAMES, PLUS MANY MORE!**



**CONTACT- 07752810389**

**INFO@LIMITLESSACTIVITIES.CO.UK**



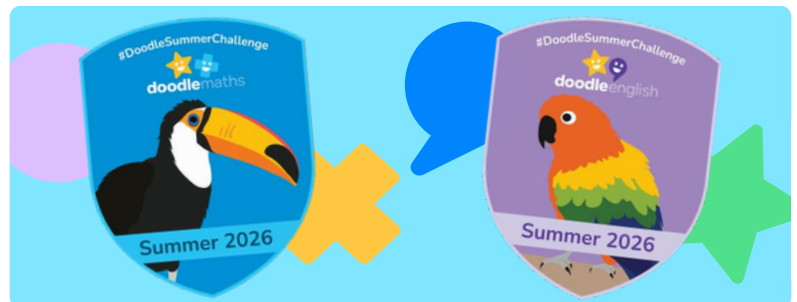


# The Doodle Summer Challenge

## 1st of July - 31st of August 2026

### Earn a pin badge and certificate!

Between the **1st of July - 31st of August**, Doodle are running two exciting Summer Challenges — the DoodleMaths Challenge and the DoodleEnglish Challenge!



Both Challenges are designed to encourage a few minutes of daily Doodling, keeping your child engaged in their learning and boosting their skills. Plus, they can **earn exclusive rewards** by taking part!

### How to take part

#### 1 Create or link your account

If you haven't already, create and/or link a parent account to your child's school account. To find out how to do this, see the reverse of this flyer or visit [help.doodlelearning.com](https://help.doodlelearning.com) and search **'how to link account'**.

#### 2 Register for the Challenge

From the **1st of July**, visit [parents.doodlelearning.com](https://parents.doodlelearning.com) and press **Register** next to your child's name for one or both Challenges.\* **The last day to register for and begin the Challenge is the 18th of August.**

#### 3 Doodle 'little and often'

Once you've registered, encourage your child to **earn 750 stars** (or **600** if they were born after August 2018) and use **DoodleMaths and/or DoodleEnglish for 14 days\*** between the **1st of July – 31st of August.**

\*These 14 days don't need to be in a row. A day of use is defined as completing at least one exercise between 00:01 and 23:59.

#### 4 Receive a pin badge and certificate!

Once they've reached their target, we'll send a **pin badge to their school.** This will arrive after the Challenge comes to an end. You can also claim a **personalised certificate** for them by visiting [parents.doodlelearning.com](https://parents.doodlelearning.com) and pressing **Download certificate.** The last chance to do this is midnight on the 25th of September.



Tag us and use the hashtag **#DoodleSummerChallenge**

For more information, please visit [doodlelearning.com/challenge](https://doodlelearning.com/challenge).

**Any questions? Visit [help.doodlelearning.com](https://help.doodlelearning.com)** and press on the green circle icon to chat to our team.



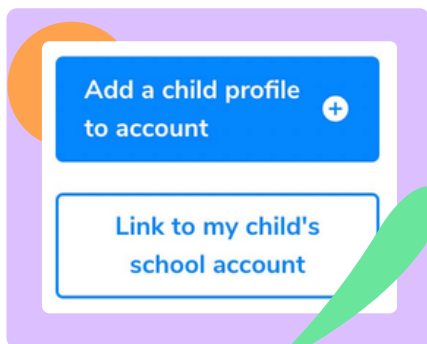
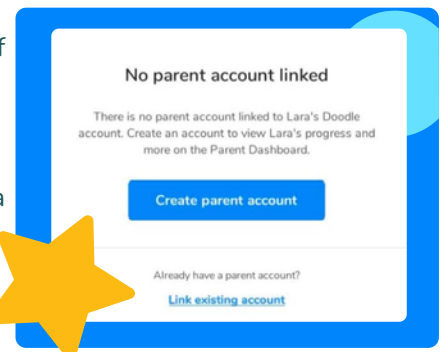
## How to create and/or link a parent account to your child's school account

Creating a parent account is really important (and really easy!). By doing this, you'll be able to enter the Summer Challenge and claim your child's personalised certificate by visiting [parents.doodlelearning.com](https://parents.doodlelearning.com), our online parent hub.



## How to create and/or link a parent account via the Doodle apps

- 1 Log in to any of the Doodle apps using the username and password provided by your child's school. **If you're not sure what these are, please contact your child's school rather than creating a new account for them.**
- 2 From the Learning Zone, click on the arrow icon in the top left-hand corner of the screen
- 3 Select **Settings** and press **Parent details**
- 4 If you're new to Doodle, choose **Create parent account**. If you already have a Doodle account, click on **Link existing account**.
- 5 Enter your details to link your email address to your child's account



## How to create and/or link a parent account via the Parent Dashboard

- 1 Visit [parents.doodlelearning.com](https://parents.doodlelearning.com)
- 2 If you're new to Doodle, click on **Create account** and follow the instructions. After you've done this, log in to [parents.doodlelearning.com](https://parents.doodlelearning.com). If you already have a parent account, log in to [parents.doodlelearning.com](https://parents.doodlelearning.com).
- 3 Once you've logged in, hover over **My account** and select **Child details**
- 4 Click on **Link to my child's school account** and enter the username and password provided by your child's school. **If you're not sure what these are, please contact your child's school rather than creating a new account for them.**

### Good luck, and happy Doodling!

\*The Challenge available will depend on your school's Doodle subscription. If you'd like to join both Challenges but your school does not subscribe to DoodleMaths or DoodleEnglish, a home subscription can be taken out in the subject you're not subscribed to. To receive 2 FREE weeks of a home subscription, please visit [doodlelearning.com/challenge-offer](https://doodlelearning.com/challenge-offer).



## Summer Game plans

**Water Balloon Toss**  
— Kids pair up and toss a balloon back and forth, taking a step back each round. Last balloon standing wins.

**Chalk Art Challenge** — Give kids themes (animals, summer, space) and let them create pavement masterpieces.

## Catch Up on Past Newsletters

Early development plays a role in children's success. The government's Best Start in Life strategy is strengthening children's early development by expanding high-quality early education and family support, helping more children start school ready to learn. Regular school attendance builds on these early foundations to support their future success.

## Homework

## Talk

Linking learning from the classroom to life at home can help to improve language and communication skills. We will continue these discussions in class next week.

EYFS

Year 1

Year 2

Year 3

Year 4

Year 5

Year 6

 **P.T.A**  
News

**B.O.S.S.**   
News